

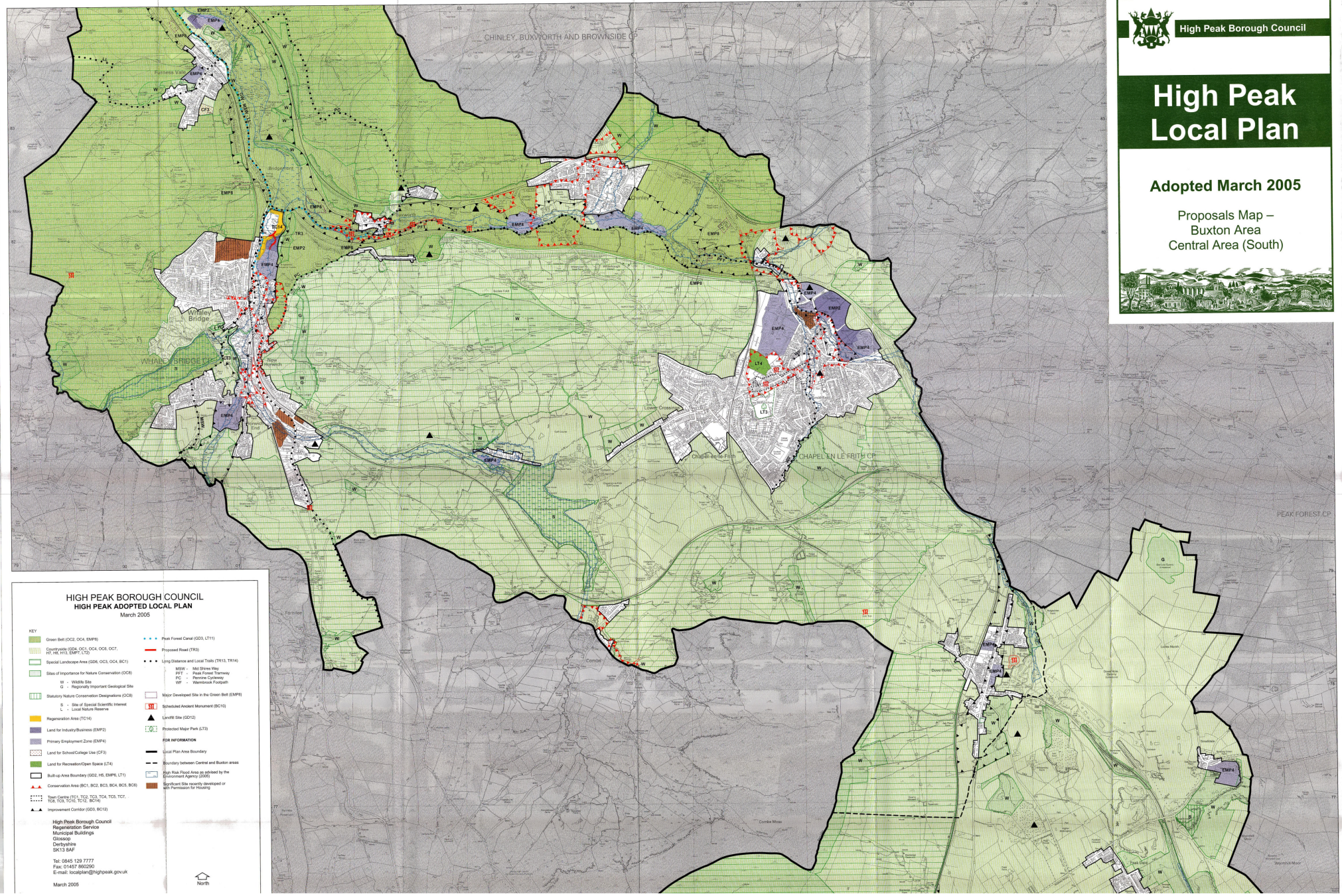


High Peak Borough Council

# High Peak Local Plan

Adopted March 2005

Proposals Map –  
Buxton Area  
Central Area (South)



### HIGH PEAK BOROUGH COUNCIL HIGH PEAK ADOPTED LOCAL PLAN March 2005

- KEY**
- Green Belt (OCC, OCA, EMP)
  - Conservation Area (CA, OCA, OGC, OGT, HC, HL, HLI, EMP, CPO)
  - Special Landscape Area (SLA, OCA, OCA, BC1)
  - Sites of Importance for Nature Conservation (SINC)
  - W - Wildlife Site
  - G - Regionally Important Geological Site
  - Statutory Nature Conservation Designations (OCS)
    - S - Site of Special Scientific Interest
    - L - Local Nature Reserve
  - Regeneration Area (TC14)
  - Land for Industry/Business (EMIP2)
  - Primary Employment Zone (EMIP4)
  - Land for Schools/College Use (CF)
  - Land for Recreation/Open Space (LT4)
  - Build-up Area Boundary (OCC, HL, EMIP, LT1)
  - Conservation Area (CA, OCA, OCA, BC1, BC2, BC3, BC4, BC5)
  - Major Development Sites in the Green Belt (EMPR)
  - Improvement Corridor (OCC, BC12)
- FOR INFORMATION**
- Local Plan Area Boundary
  - Boundary between Central and Buxton areas
  - High Risk Flood Area as defined by the Environment Agency (2005)
  - Significant sites recently developed or with permission for housing
- High Peak Borough Council  
Regeneration Services  
Municipal Buildings  
Dronoway  
Derbyshire  
SK13 8AF  
Tel: 01455 129 7777  
Fax: 01455 895000  
E-mail: localplan@highpeak.gov.uk  
March 2005

