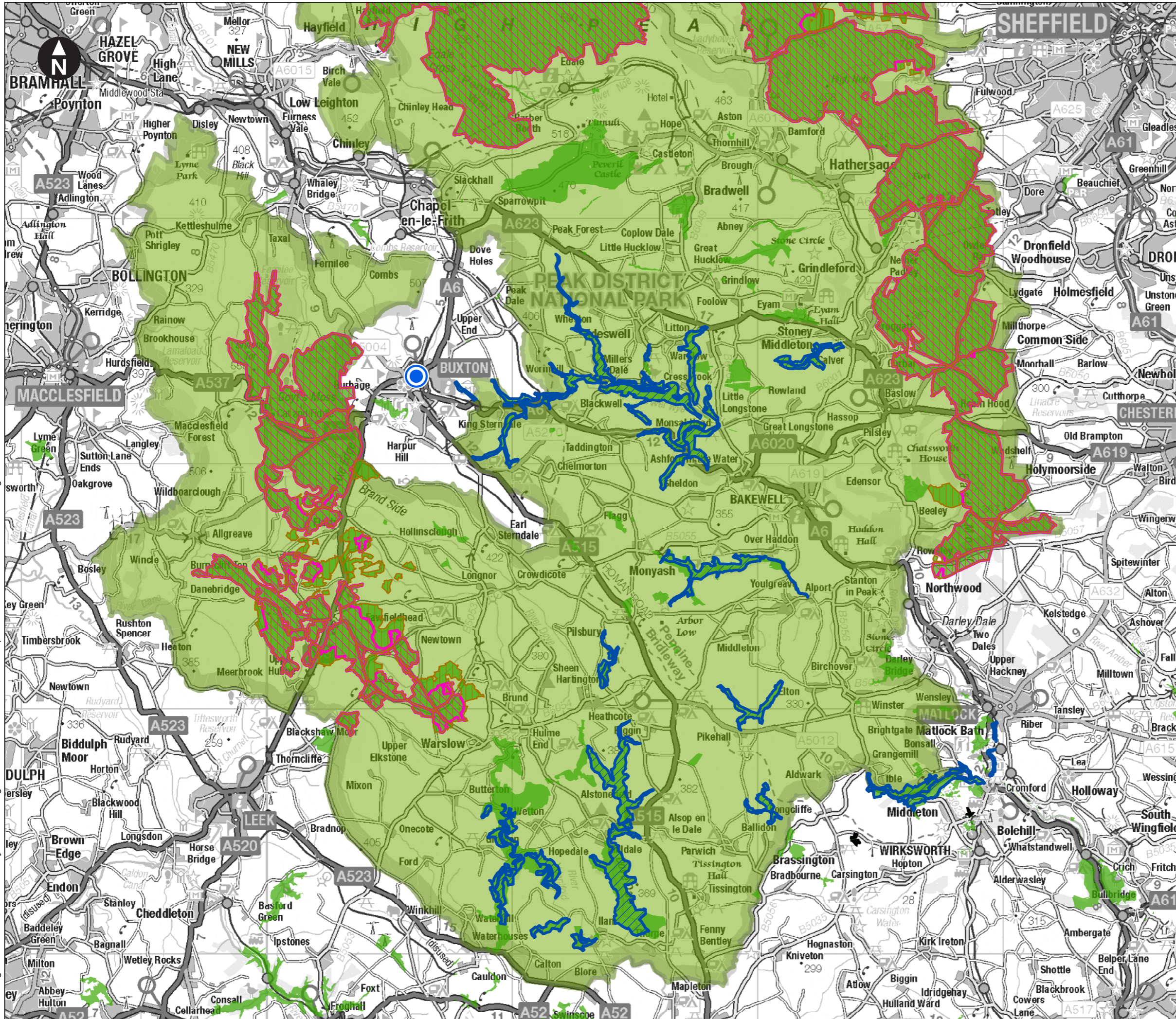
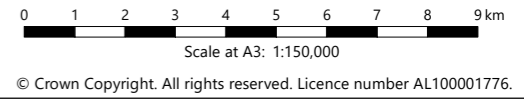


\\sal-fs12.global.amec.com\shared\Projects\42531 High Peak SPD\PRE-TRANSITION\Graphics\ArcGIS\MXD\SAL001.mxd Originator: wilsc03



Key

- Buxton
- Special Areas of Conservation**
  - Peak District Dales
  - South Pennine Moors  
Sourced from DEFRA (29th July 2019)
- Special Protection Area**
  - Peak District Moors (South Pennine Moors Phase 1)  
Sourced from DEFRA (1st July 2019)
  - Sites of Special Scientific Interest  
Sourced from DEFRA (22nd November 2019)
  - Peak District National Park  
Sourced from DEFRA (9th April 2019)



© Crown Copyright. All rights reserved. Licence number AL100001776.

Client

**High Peak Borough Council**  
*working for our community*

Water in Buxton SPD

Designated Nature Conservation Sites

September 2021